

# THERMOS

SSL-72A/73A/74A

SSL-75A/76A

4000LM~12000LM

## Preferred Luminaire For Urban Main Street Lighting Project



SOLAR STREET LIGHT



Solar



ALS



Safety



IP65



TCS



Ray Sensor



Charging  
temperature



Working  
temperature



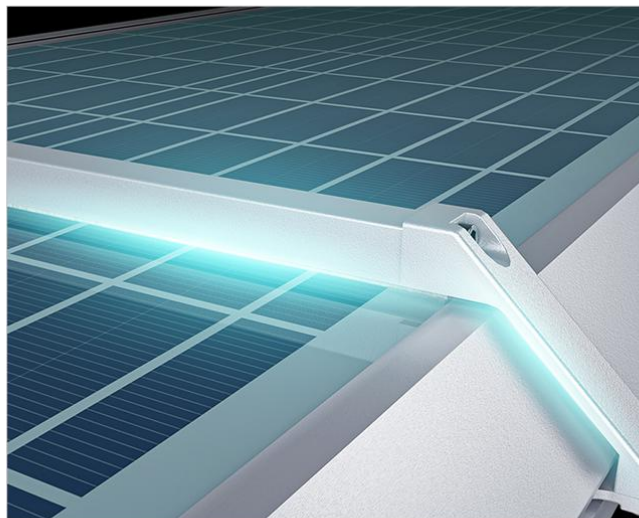
Heating  
Version



3  
YEARS  
Warranty

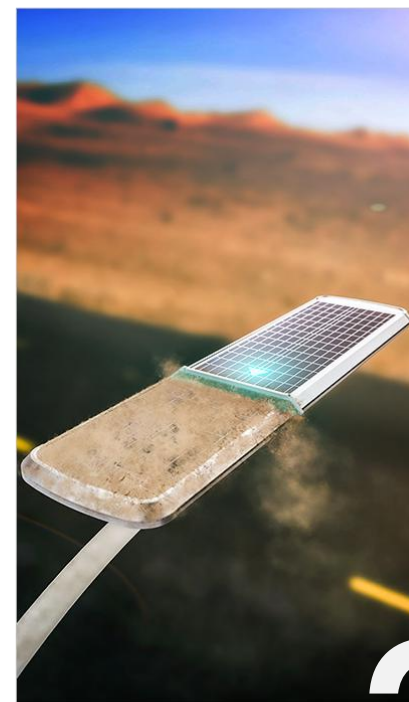
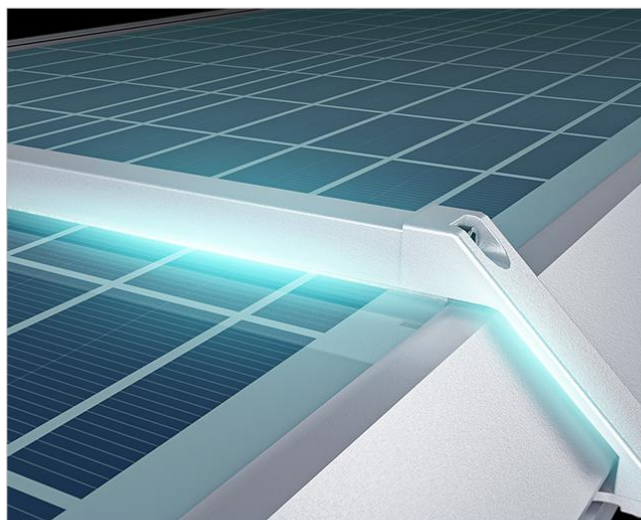
# AUTOMATIC HEATING FUNCTION

Built-in heating system ensures the lamp working well in extreme cold area.



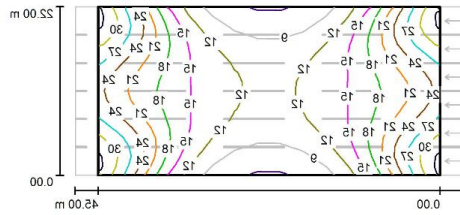
# HIGH-TEMPERATURE PROTECTION

Battery Lifespan in high temperature area is longer as one feature will prevent battery still being charged at abnormal Hot environment.

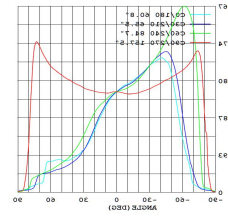


Item: THERMOS 2	SSL-72A	SSL-73A	SSL-74A	SSL-75A	SSL-76A
Light Brightness	4000LM	6000LM	8000LM	10000LM	12000LM
<b>Solar panel</b>					
Power	35.7W / 16.2V	47.5W / 16.2V	61.4W / 16.2V	78.8W / 16.2V	95W / 16.2V
<b>Li-ion battery</b>					
Capacity	14.8V 269.36WH 2.6AH/PCS	14.8V 384.8WH 2.6AH/PCS	14.8V 538.72WH 2.6AH/PCS	14.8V 654.16WH 2.6AH/PCS	14.8V 769.6WH 2.6AH/PCS
Charging / Discharging Temp	0~45°C / -20~60°C				
Charging Time	8.2H	8.8H	9.6H	9H	8.8H
LED (OSRAM)	3030 / 96pcs	3030 / 144pcs	3030 / 192pcs	3030 / 240pcs	3030 / 336pcs
Color Temp	4000K, Ra>70	4000K, Ra>70	4000K, Ra>70	4000K, Ra>70	4000K, Ra>70
Efficiency	230lm/W	230lm/W	230lm/W	230lm/W	230lm/W
Types of Lighting	Type 4				
<b>Performance</b>					
Lighting Time in Rainy day	>10 Days				
Control Mode	Button Switch, ON/OFF Long Press 1.5s Long press for 6s to reset				
Lighting Mode	M1: 30% (PIR) till dawn M2: 100% 5H + 25% 5H (PIR) + 70% till dawn M3: 70% till dawn				
Capacity Indication	Charging: Capacity<20%, LED1 flicker; 20%<Capacity<40%, LED1 on and LED2 blinking; 40%<capacity<60%, LED1 and LED2 bright, LED3 flash; 60%<Capacity<95%, LED1, 2, and 3 are on, LED4 flash; Capacity>95%, all lights on; Discharge: capacity>80%, all lights on; 60%<power<80%, LED1, 2, 3 ON, LED4 OFF; 20%<power<60%, LED1, 2 bright, LED3/4 OFF; 5%<power<20%, LED1 bright, LED2, 3, 4 OFF; Capacity<5%, indicator light OFF				
FAS	yes				
PIR	120°, >8m				
Core technology	ALS2.4				
Solar Panel Autoclean	YES				
IP / IK Class	IP65 / IK08				
Pole	φ60mm				
Install Height / Distance	4m / 18m	6m / 27m	8m / 36m	10m / 45m	12m / 54m
Material	Aluminium & PC				

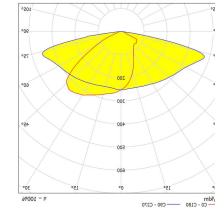
Road Simulated Diagram



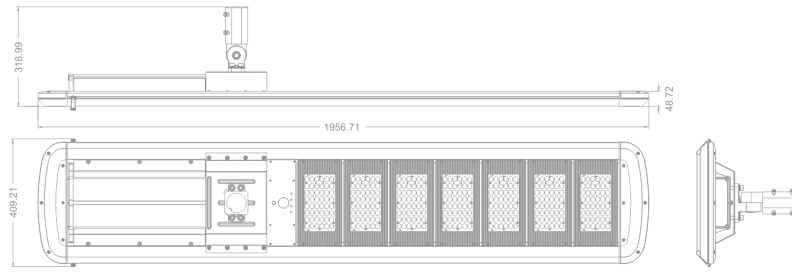
Illumination Curve



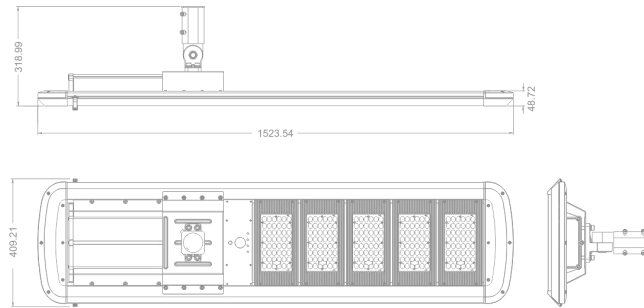
Luminance Distribution



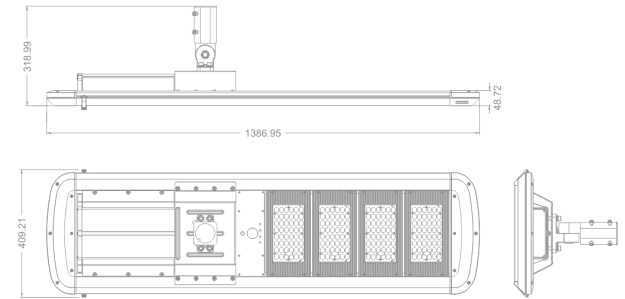
unit: mm



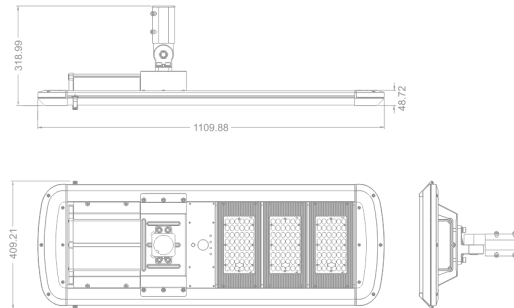
SSL-76A



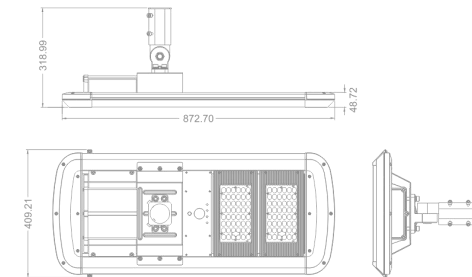
SSL-75A



SSL-74A



SSL-73A



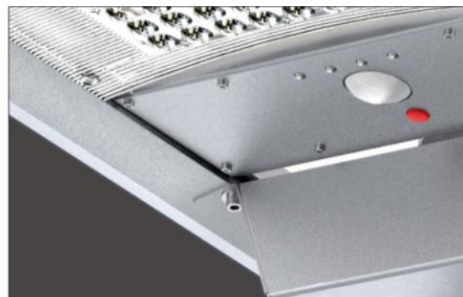
SSL-72A



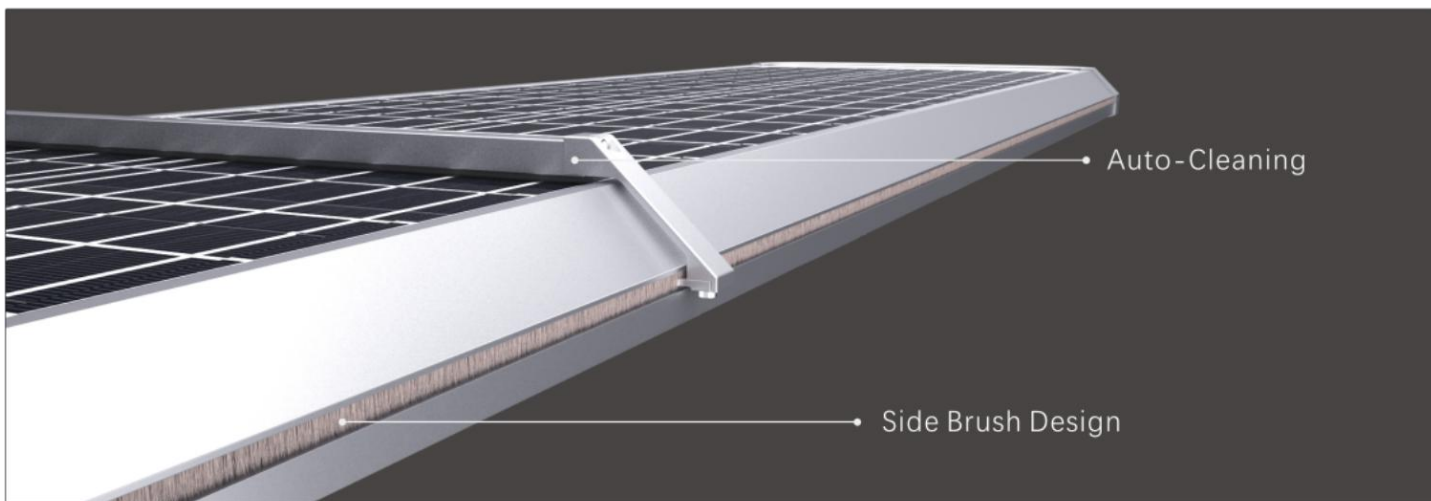
High Lumen LEDs 230lm/W



LED Indicator for All Status



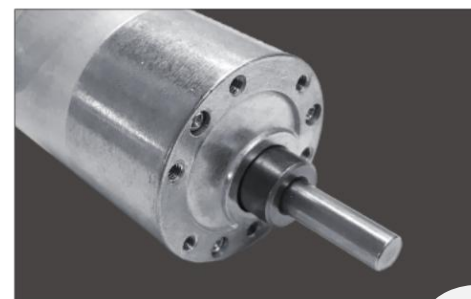
Bracket  
Adjustable Angle Bracket (0°~180°)



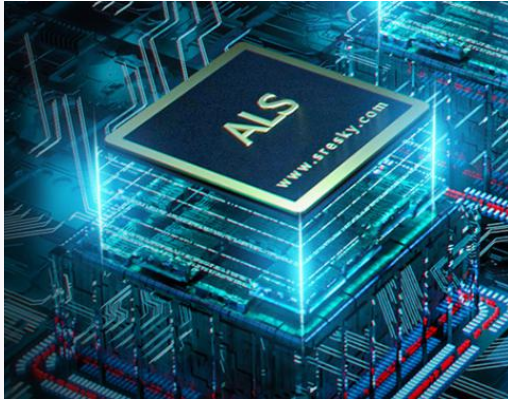
Battery Pack  
Easy to Maintain



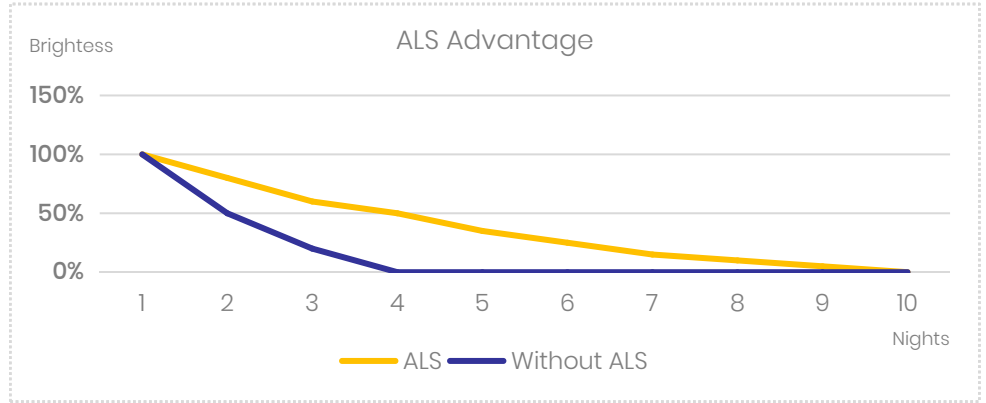
Monocrystalline  
Solar Charging Efficiency: >21%



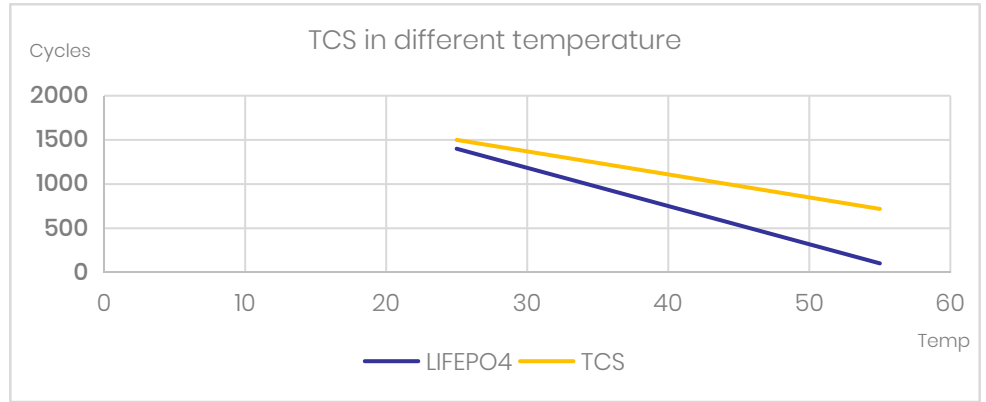
Volatility Resistance in High TEMP  
Antifreezing in Low TEMP



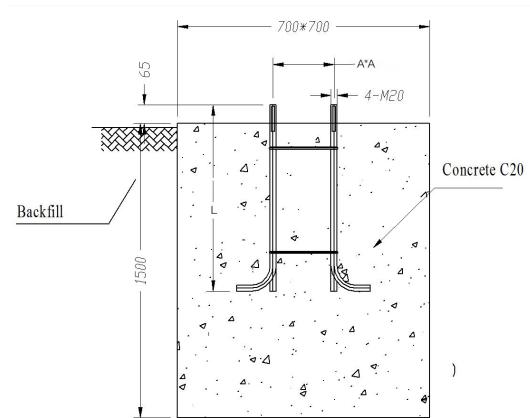
ADVANTAGE OF ALS



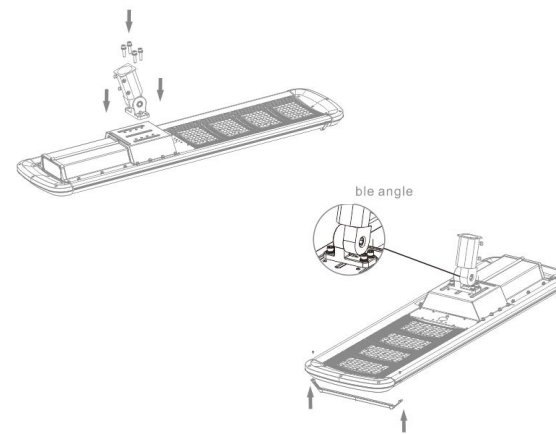
ADVANTAGE OF TCS



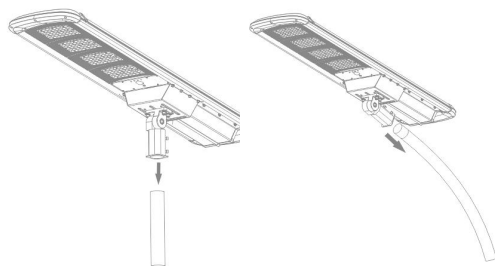
- 1 Dig a hole according to the size of the foundation cage, put the foundation cage into the hole and fix it with concrete C20.



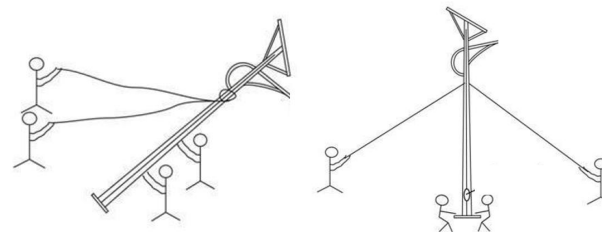
- 2 Use the supplied screws to fix the bracket on the lamp.

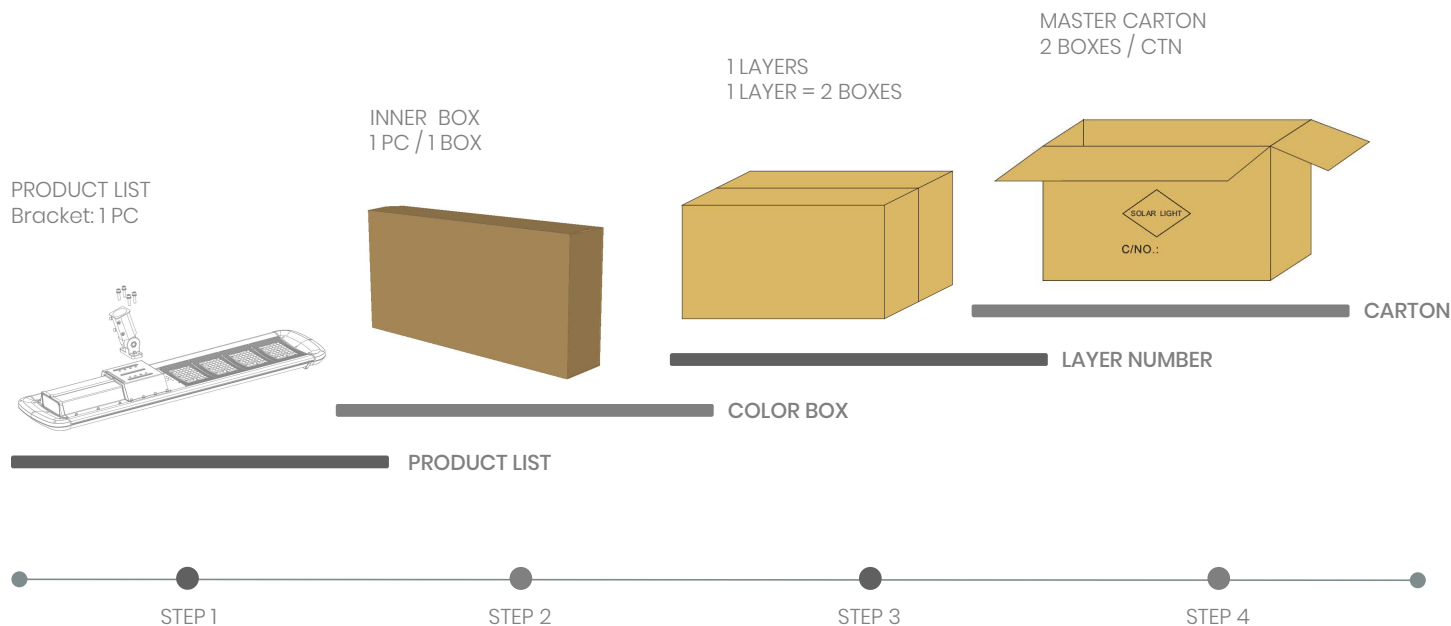


- 3 Use the supplied screws to fix the lamp on the pole.



- 4 Lift the lamp pole by the person or machine, align the bottom flange of the lamp pole with the foundation cage, and then fix the lamp pole with screws.





MODEL NO.	PCS/CTN	QTY(PCS)	CTN QTY	CARTON SIZE(MM)	N.W.(KG)	G.W.(KG)
SSL-72A	2	2	1	1060*430*533	22.4	30.2
SSL-73A	2	2	1	1268*430*533	27	35.2
SSL-74A	2	2	1	1555*423*535	34	43.34
SSL-75A	2	2	1	1690*430*535	37.2	47.7
SSL-76A	2	2	1	2113*430*533	45.3	57.4
SSL-72A / 73A / 74A / 75A / 76A Bracket	8	8	1	477*380*166	9	11.34

Net weight and gross weight are for reference only





S O L A R   /   S T R E E T   /   L I G H T

