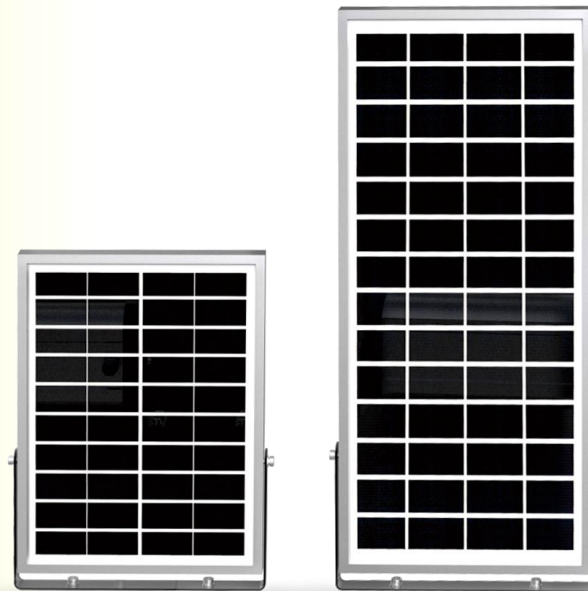


URANUS SWL-20PRO/40PRO

3000LM/6000LM
**Preferred
Luminaire For
Small Lighting
Project**



Solar



ALS



Safety



Ray Sensor



45°C
0°C
Charging
temperature

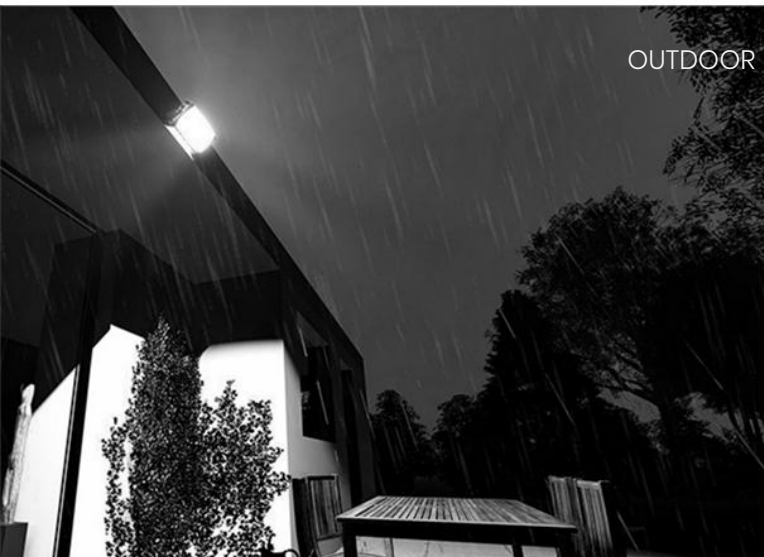


80°C
-20°C
Working
temperature

SOLAR FLOOD LIGHT



GARAGE



OUTDOOR

SOLAR FLOOD LIGHT

AMAZING IN PERFECT USE

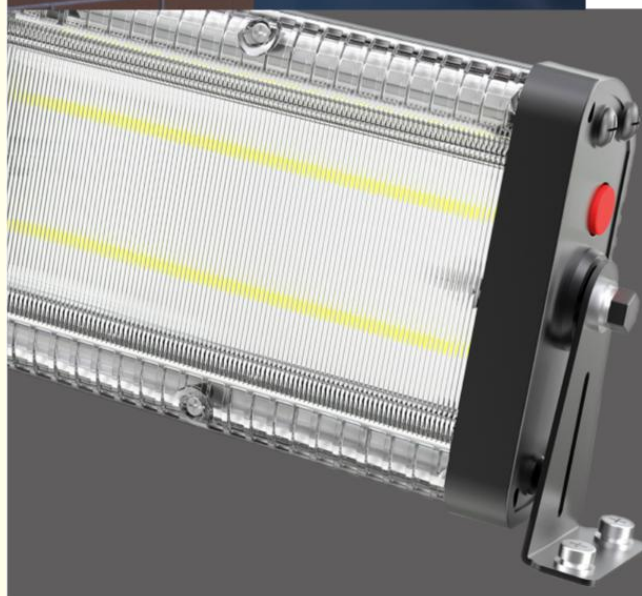


SWL-40PRO
Equal to 600W Incandescent Lamp



SWL-20PRO
Equal to 300W Incandescent Lamp

2



Product Advantage

ALS Technology Guarantees 10 Continuous Working Nights
TCS Technology Ensures Longer Battery Lifespan

Equal to
300W / 600W
Incandescent
Lamp



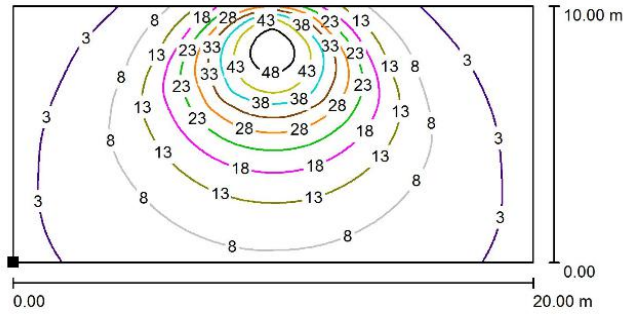
3.5m cable
extra
extension
cable is
available

3.5M

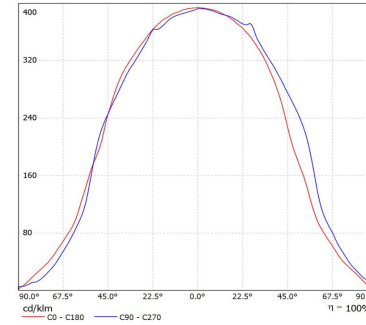
Item:	SWL-20PRO	SWL-40PRO
Light Brightness	3000LM	6000LM
Solar panel		
Power	Monocrystalline silicon, 14V/ 5W	Monocrystalline silicon, 14V/ 10W
Li-ion battery		
Capacity	3.7V 28.86WH	3.7V 57.72WH
Charging / Discharging Temp	0~45°C / -20~60°C	0~45°C / -20~60°C
Charging Time	7.3H	7.3H
LED (OSRAM)	3030, 30pcs	3030, 60pcs
Color Temp	5700K, Ra>70	5700K, Ra>70
Efficiency	160lm/W	160lm/W
Types of Lighting	Symmetrical 90°	Symmetrical 90°
Performance		
Lighting Time in Rainy day	>3 days	>3 days
Control Mode	Button Switch, ON/OFF Long Press 1.5s	
Lighting Mode (Remote Control)	M1: 50% (5H) + 10% Till dawn M2: 30% (5H) + 10% Till dawn M3: 20% Till dawn T: 100% Timed 2Hrs and then return to the previous mode; Memory the next day	M1: 50% (5H) + 10% Till dawn M2: 30% (5H) + 10% Till dawn M3: 20% Till dawn T: 100% Timed 2Hrs and then return to the previous mode; Memory the next day
Mode Indication	M1: Red, M2: Green, M3: Orange, T: Green light flashes	
Capacity Indication	Green: >70% Orange: 30%~70% Red: 10%~30%	Green: >70% Orange: 30%~70% Red: 10%~30%
Core technology	ALS2.3	ALS2.3
IP	IP65	IP65
Material	Aluminum	Aluminum



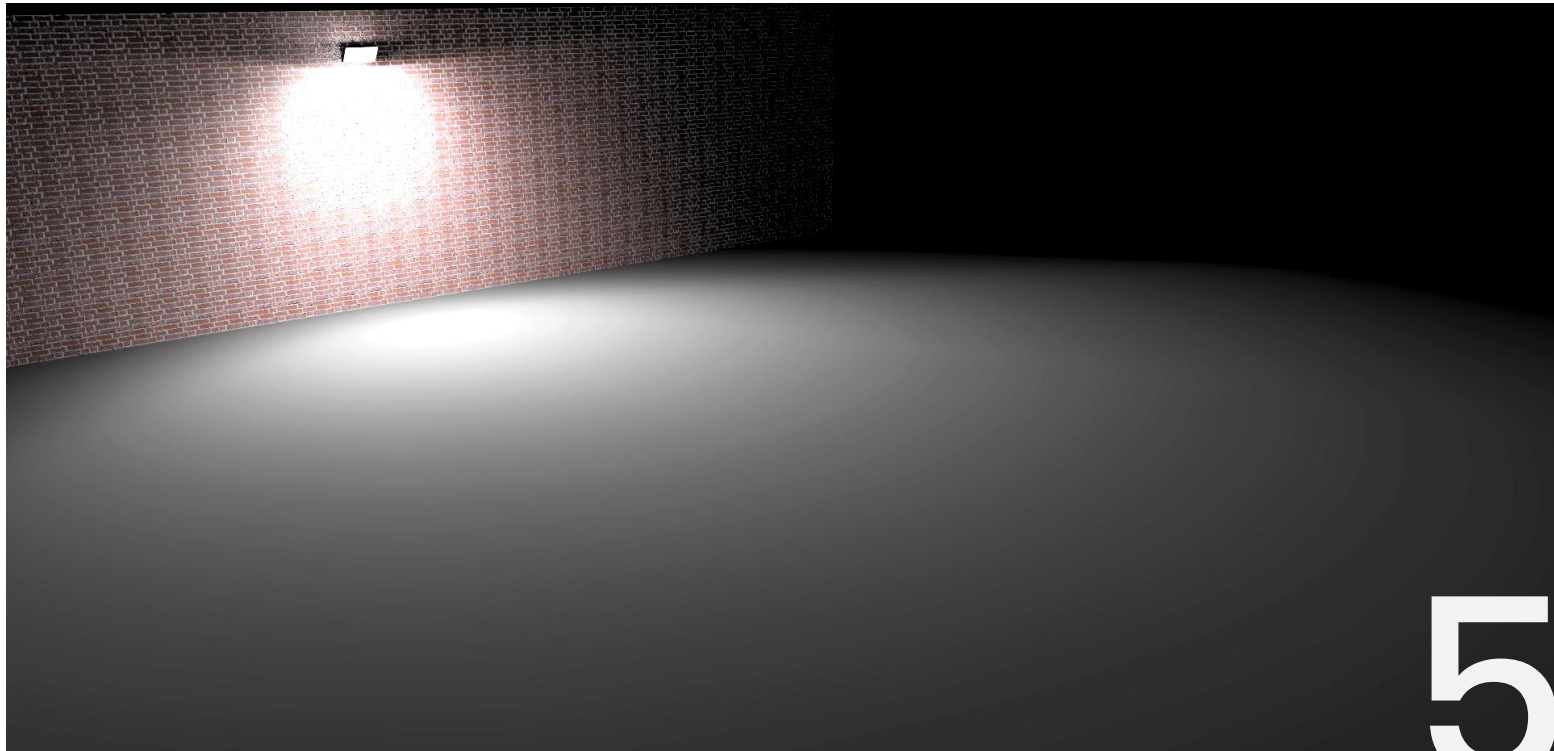
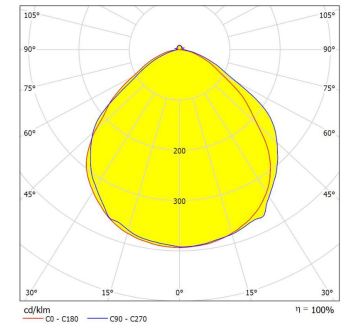
Road Simulated Diagram



Illumination Curve

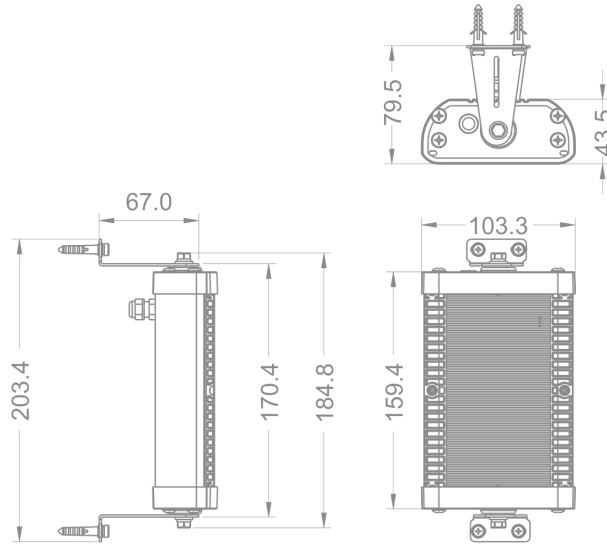


Luminance Distribution

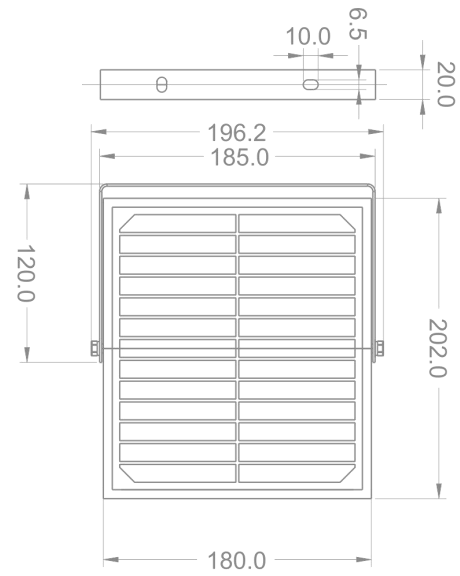


unit: mm

Solar Light

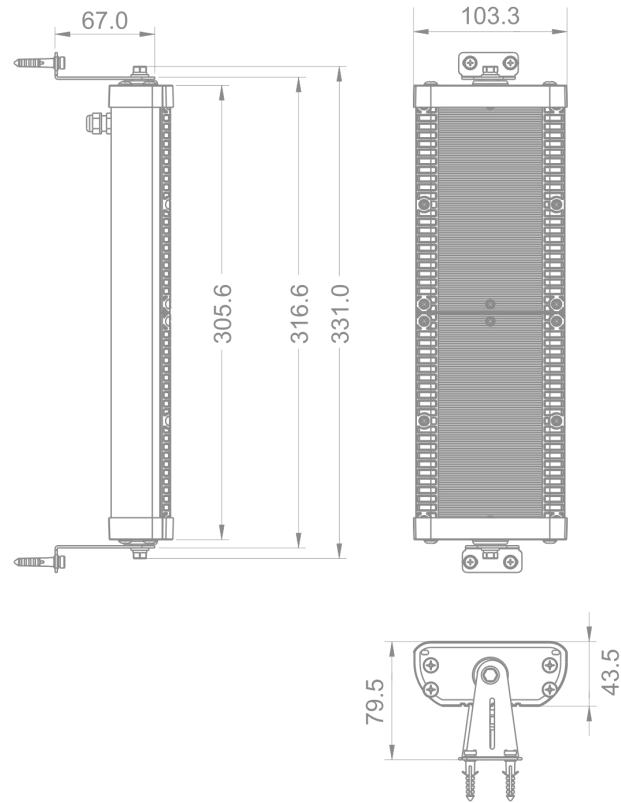


Solar Panel

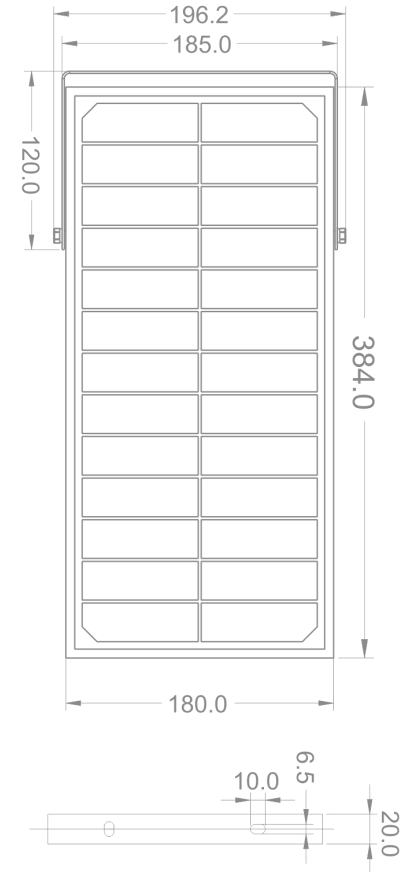


unit: mm

Solar Light



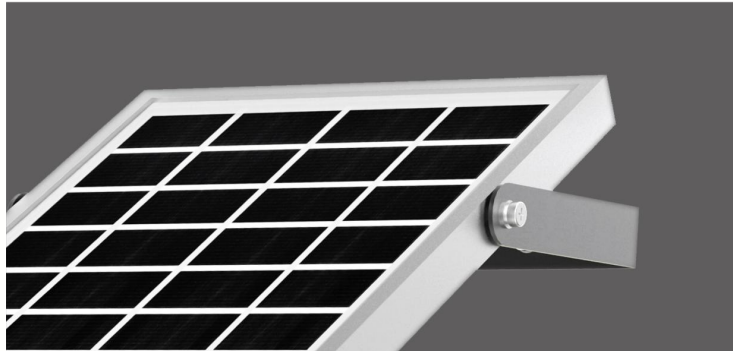
Solar Panel



SOLAR FLOOD LIGHT



SOLAR FLOOD LIGHT



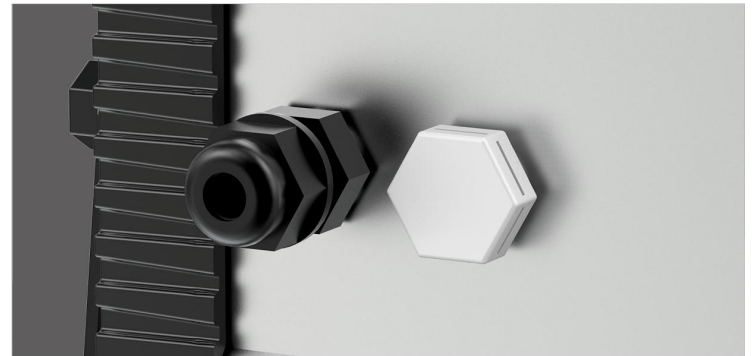
Solar Charging Efficiency: >21%



High lumen LEDs 160lm/W



Switch
Bracket



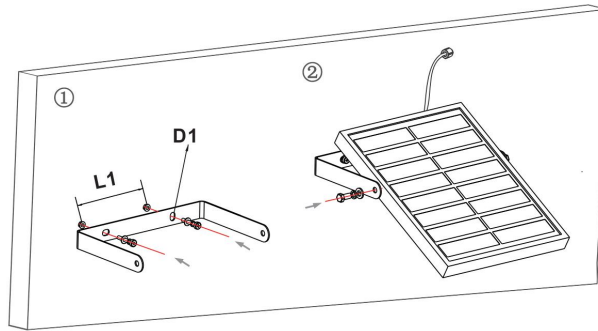
Air Valve



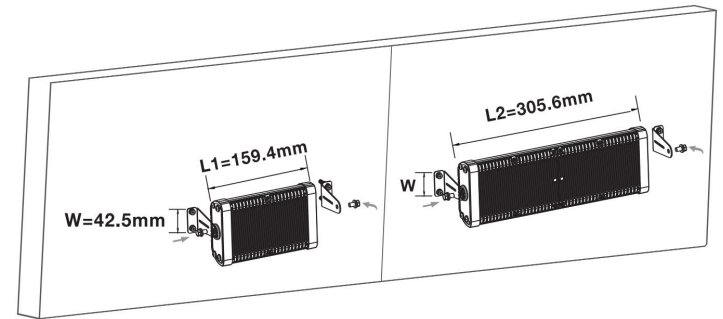
A Great Company should always pay the highest attention to every detail of design, and the craftsmanship spirit should be filled in the whole design process and mass production.



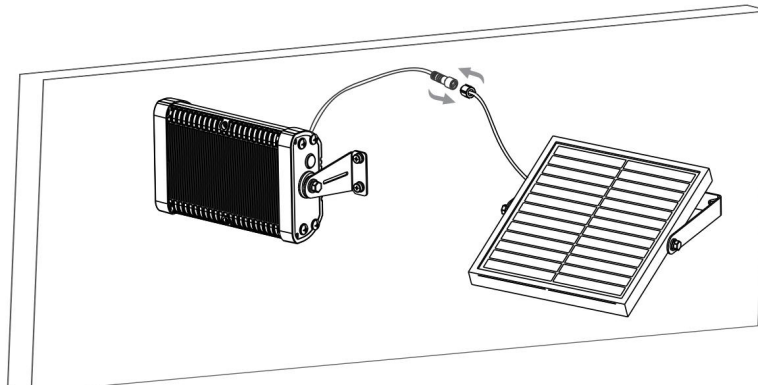
- 1 Fix the bracket on the wall, then screw solar panel into bracket.
 D1 (10W / 5W): $\varnothing 6.5\text{mm}$
 L1 (10W / 5W): 100mm



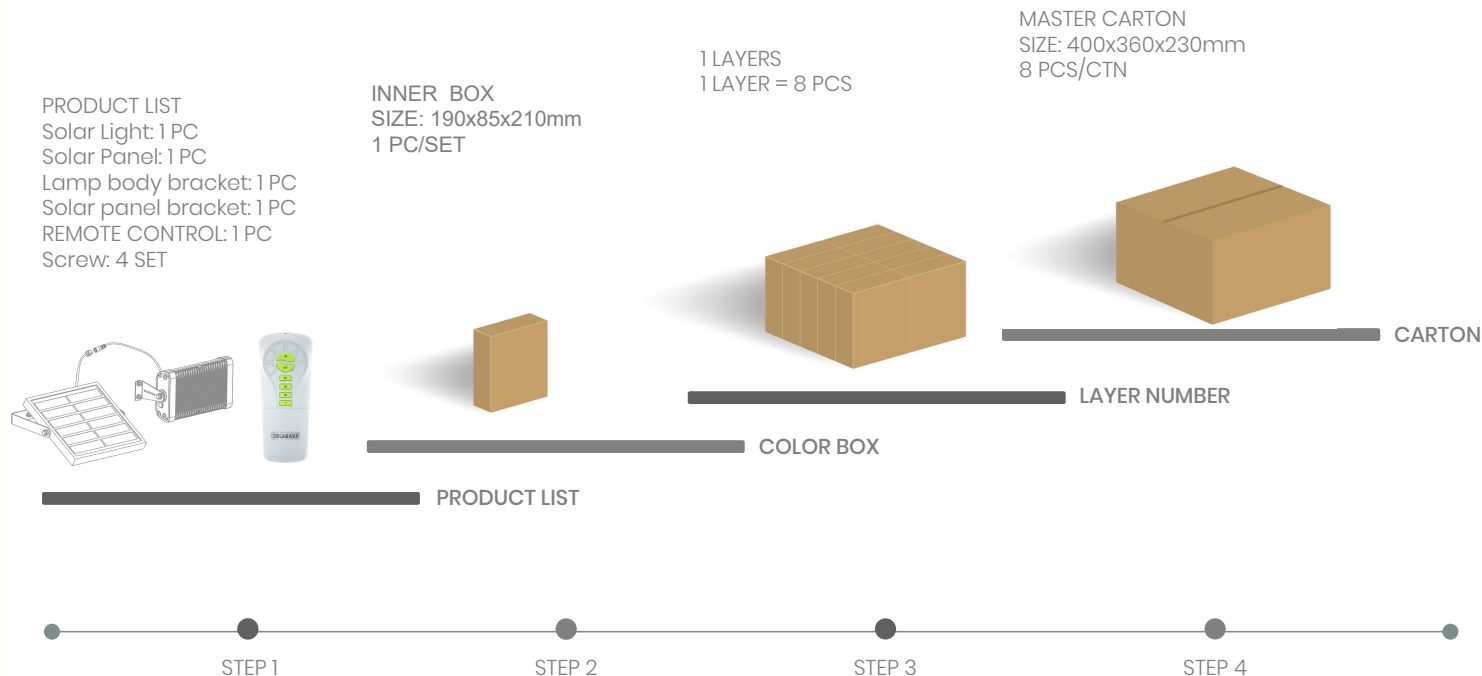
- 2 Screw the bracket on lamp body and mount on the wall.



- 3 Connect lamp and solar panel by the cable.



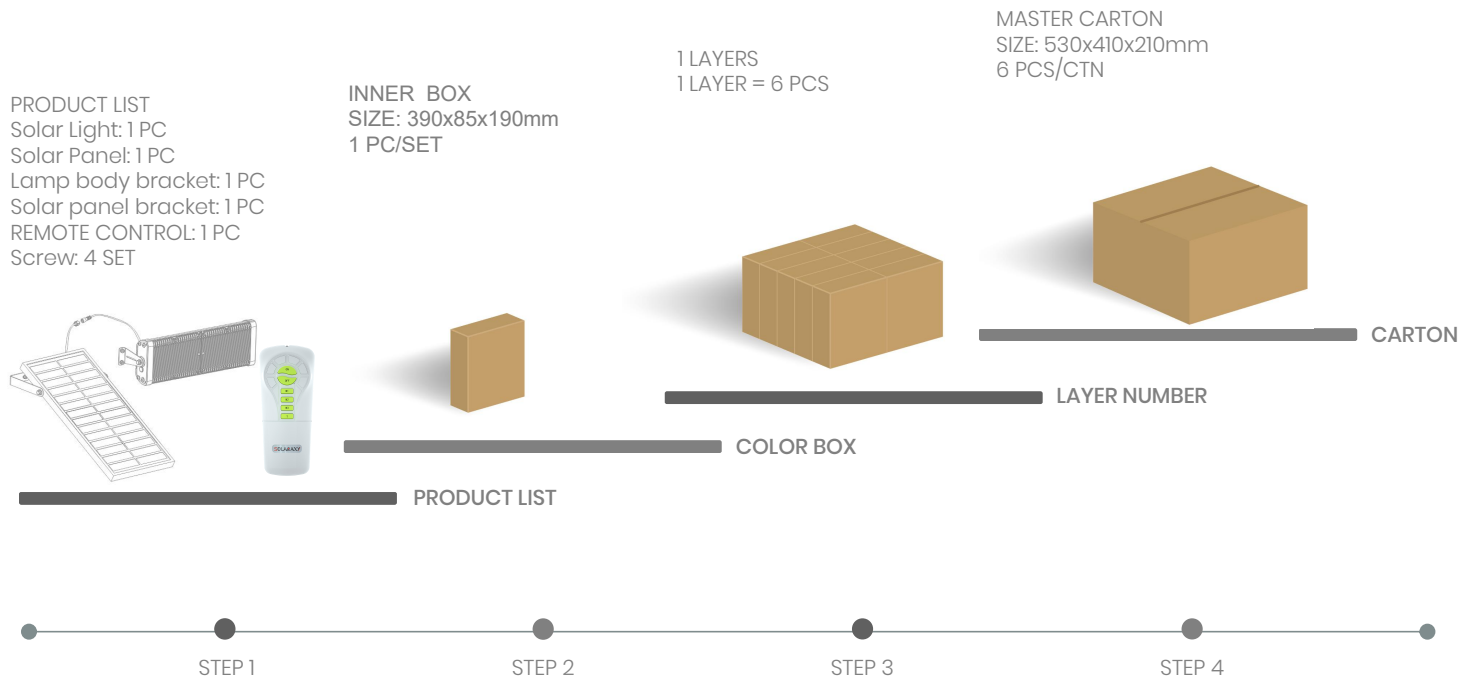
SOLAR FLOOD LIGHT



MODEL NO.	PACKING METHOD	PCS/CTN	QTY(PCS)	CTN QTY	CARTON SIZE(MM)	N.W.(KG)	G.W.(KG)
SWL-20PRO	INNER BOX	1	1	1	190*85*210	1.2	1.4
	CARTON	8	8	1	400*360*230	9.6	11.2

Net weight and gross weight are for reference only

SOLAR FLOOD LIGHT



MODEL NO.	PACKING METHOD	PCS/CTN	QTY(PCS)	CTN QTY	CARTON SIZE(MM)	N.W.(KG)	G.W.(KG)
SWL-40PRO	INNER BOX	1	1	1	390*85*190	2.2	2.6
	CARTON	6	6	1	530*410*210	13.2	15.6

Net weight and gross weight are for reference only





S O L A R / F L O O D / L I G H T

